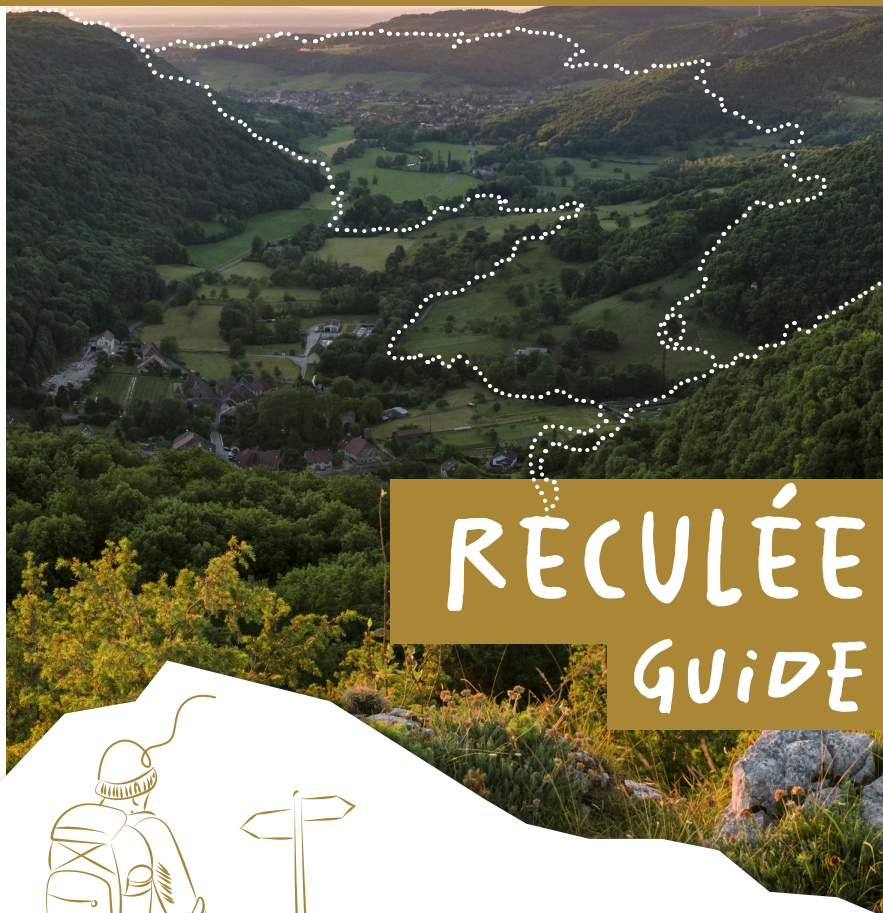


The Reculée (steephead Valley) des Planches, a European Natura 2000 site, is located at the foot of a limestone plateau that has been eroding since the waters from the Jura Mountains have been unfettered. This erosion has created some amazing and varied landscapes: cliffs, waterfalls, caves, springs... Nevertheless, because of humans '

carelessness, what Mother Nature has developed for millennia could be forever damaged. What has been destroyed can never come back. The purpose of this guide is to raise people's awareness of the environment's frailty as well as to encourage everyone to adopt good and respectful practices around this remarkable site.

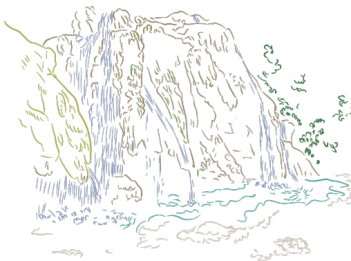


RECLÉE

Guide



WHAT TO DO, WHAT TO SEE IN THE RECLÉE?

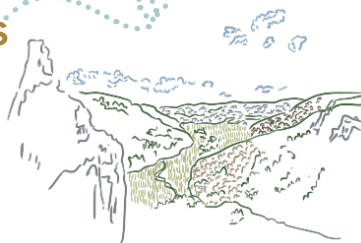


“LES TUFFS” WATERFALL

This fan-shaped waterfall is highly photogenic and very popular. But it's also very fragile due to the presence of tuff, a very crumbly limestone rock. Dipping your feet and bathing into water is strictly forbidden. However, you can walk along the Cuisance river to admire natural ponds/ rimstone dams(gours). If you keep going on, after the bridge leading to the hotel-restaurant Castel Damandre, you will make a great discovery.

PANORAMIC VIEWPOINTS

The most accessible one is the “Fer à cheval”, only two minutes’ walk. Yet, the best way to admire the whole Reclée is from the “Roche aux crocs” viewpoint. The pathway is steep, but the promontory is secured and easy to find as a Christian cross is overlooking the panorama.

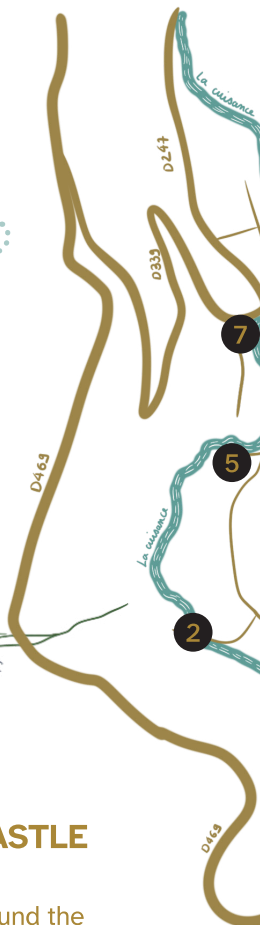


MAHAUT D'ARTOIS CASTLE RUINS

By following the hiking trail around the Reclée, you're bound to come across the ruins of an old castel, built in the 11th Century by the Counts of Burgundy and destroyed by the King of France's troops in the 15th Century. The archaeological excavations revealed a whole medieval village and a church.

CUISANCE RIVER' SPRINGS

The Cuisance is a 32km- long river surrounding Arbois. It emerges from its spring in the heart of the Reclée. The main source is located near the Planche's cave (closed). There is a second source, which is situated upstream from “Les Tufts” waterfall, near the cirque named “Fer à cheval”.



THE CASTEL DAMANDRE

For people who want to spend more time in the Reculée, the Castel Damandre hotel is the perfect place to stay. This former walnut oil mill has been converted into a four-star hotel with a renowned restaurant, with a room offering a breathtaking view on a hidden waterfall behind the property.

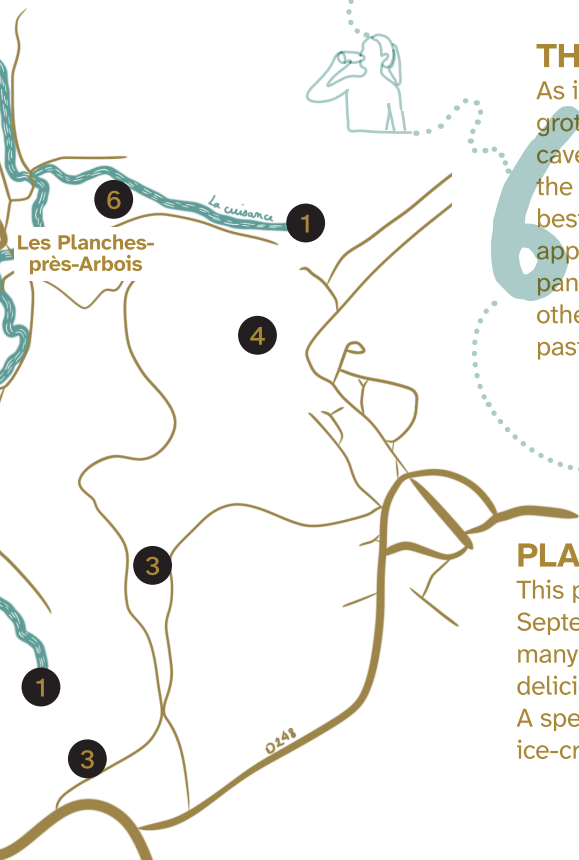


THE GROTTO'S TERRACE

As its name suggests "La Terrasse des grottes" is located at the entrance of a cave (currently closed) at the bottom of the Reculée. From here, you can enjoy the best views of the cliffs. Also, you can taste appetizers to share, craft beers, grilled panini sandwiches, crepes, waffles and other treats...a good way to appreciate this pastoral landscape.

PLANCHES'S BAR

This pub is open from April 1st to September 30th and suggests you many organic and local products with delicious meals, salads and desserts. A special mention for their homemade ice-creams and sorbets.



THE ROUTES

Arbois / Les Planches-près-Arbois

6h30 -
19 km -
difficult



La boucle du Fer à cheval

4h -
13 km -
difficult



Boucle cascade des Planches

3h15 -
12 km -
difficult



HOW TO GET THERE ?

By car ?

The car park in Les Planches-près-Arbois is restricted, especially during summer. However, the “Castel Damandre” and the snack-bar “Terrasse des grottes” provide parking spaces (booking is required) for their customers. A small car park is also available at a few hundred meters away from the village. Otherwise, it's easier to leave your car at the former cardboard factory in Mesnay and walk the last two kilometres.

By bike ?

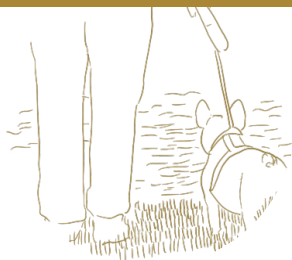
There are different paths to reach the Reculée. If you have a mountain bike, you can follow the famous trail named “L'Échappée jurassienne”.

If you don't have a bike, you can rent one at the local shop “A Tour de roues” in Arbois. Hiking maps and guidebooks are on sale at the Tourism Office.

On foot ?

From Arbois, la Châtelaine, or the cardboard factory in Mesnay, there are many paths to reach the Reculée. You can find different itineraries in this leaflet with varying lengths, then you can choose if you want to walk all day long or just a few hours.

GOOD PRACTICES



Keep your feet dry

By putting your feet into the water, you contribute to dissolve the Tuf that sustains the waterfall. If everyone does so, this fragile area will be destroyed. This rule applies to dogs as well.



Listen more, speak less

Nature is not only meant to be admired, but also to be heard. Take time to appreciate the birds' songs, the water running, the wind blowing in the trees... All these details will make your visit even more immersive.



Watch your step !

The Reculée has pre established footpaths that you must follow in order to discover this unique and unbelievable landscape. Some hikers stray from them, wishing to go off the beaten tracks and create new trails that destroy wildlife. So, please ! Don't follow their footsteps !